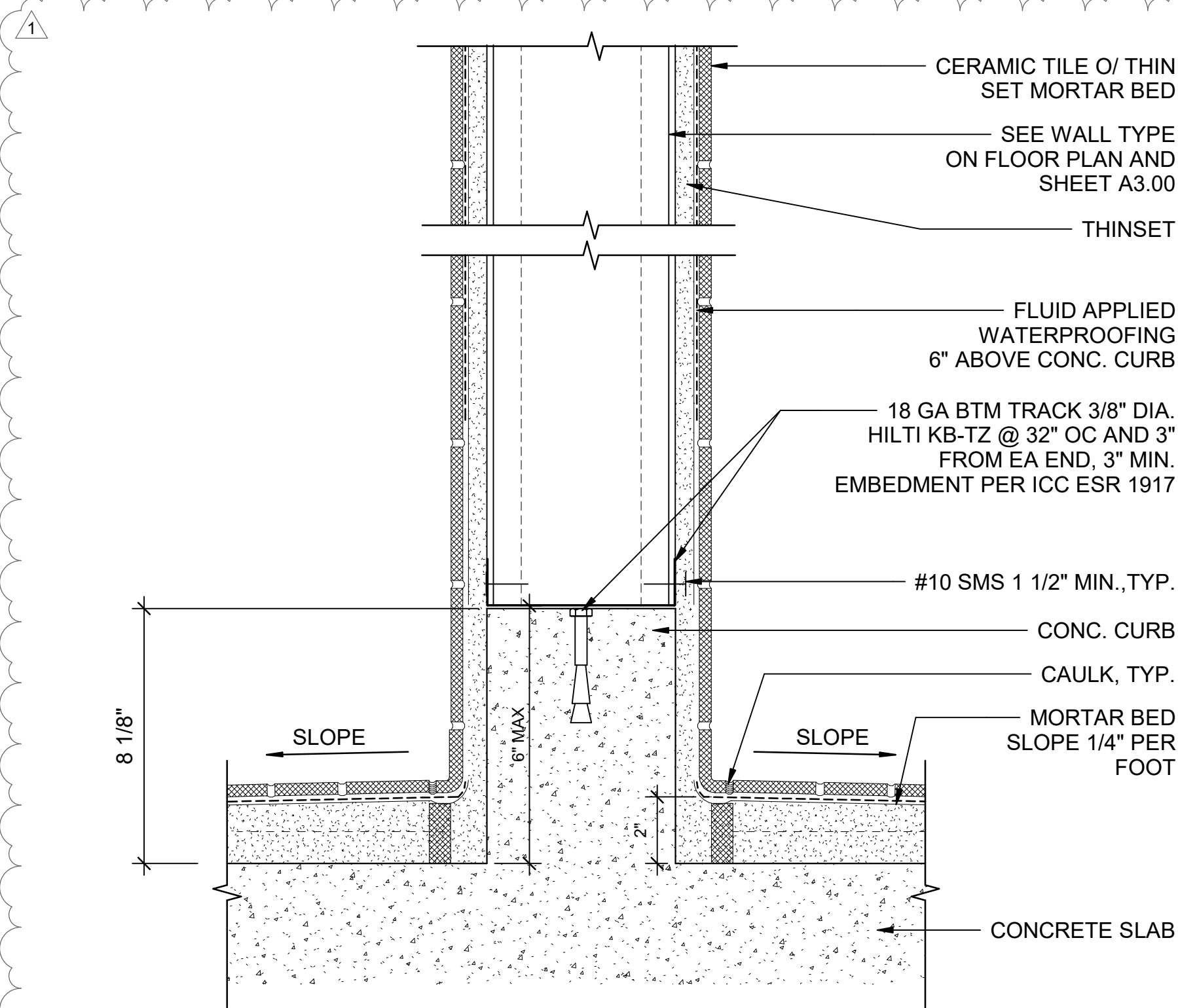
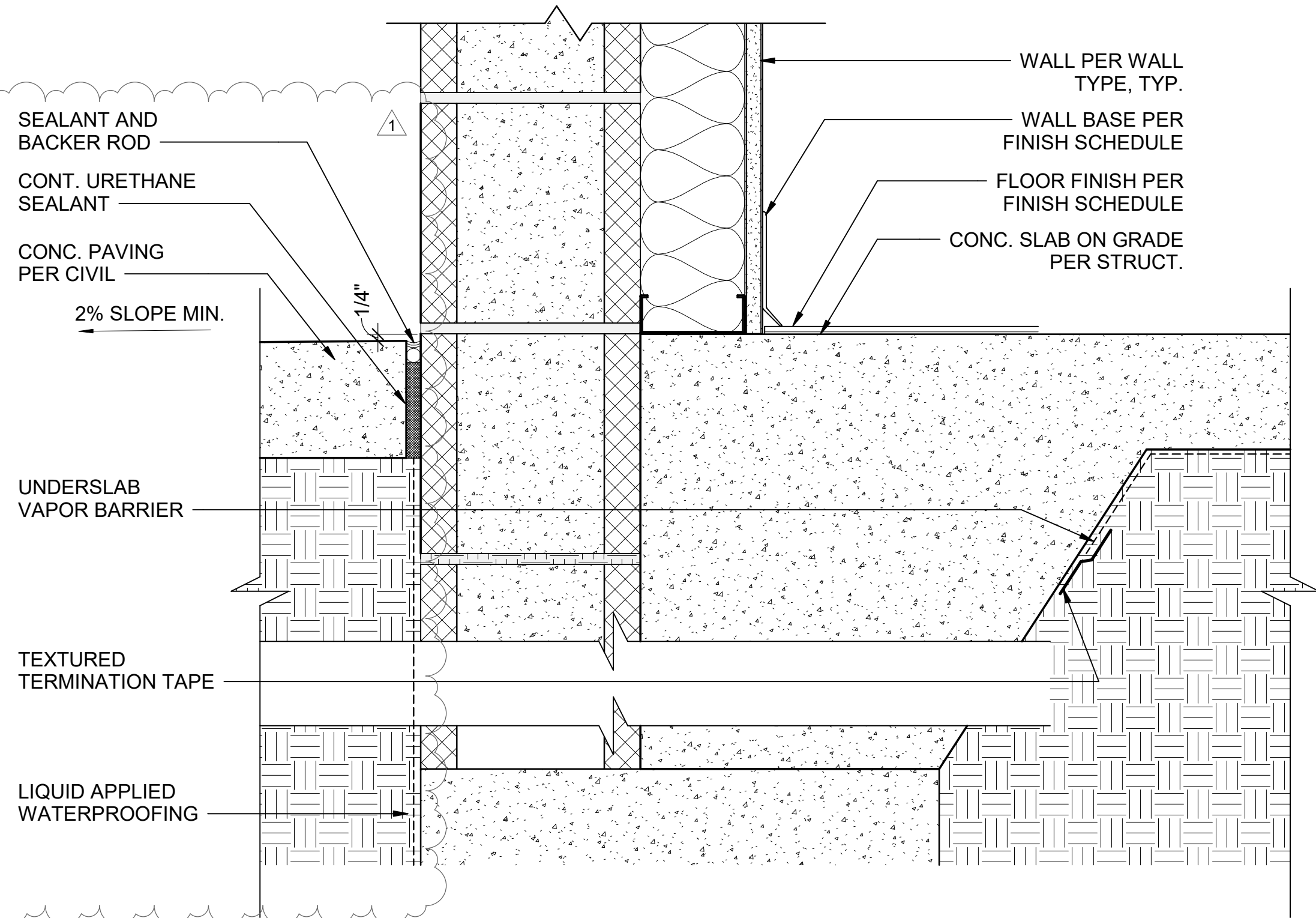


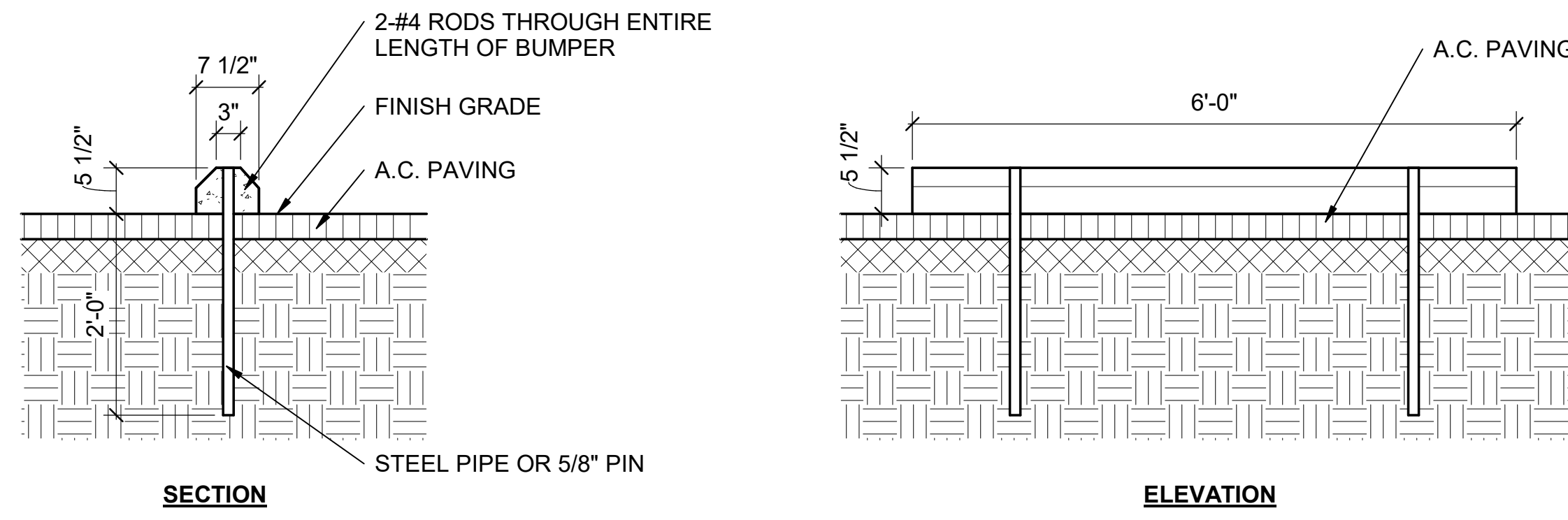
4 QUEUING RAIL DETAIL
Scale: 1 1/2" = 1'-0"



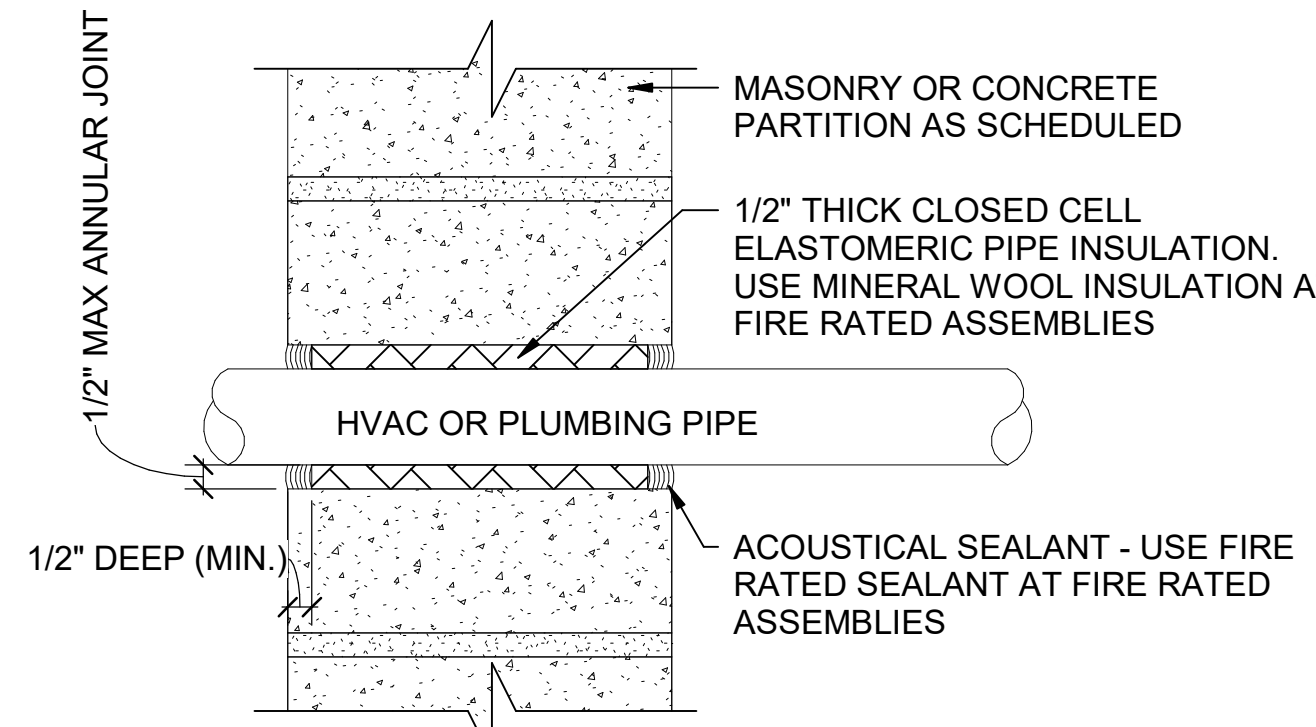
3 CERAMIC TILE WALL
Scale: 3" = 1'-0"



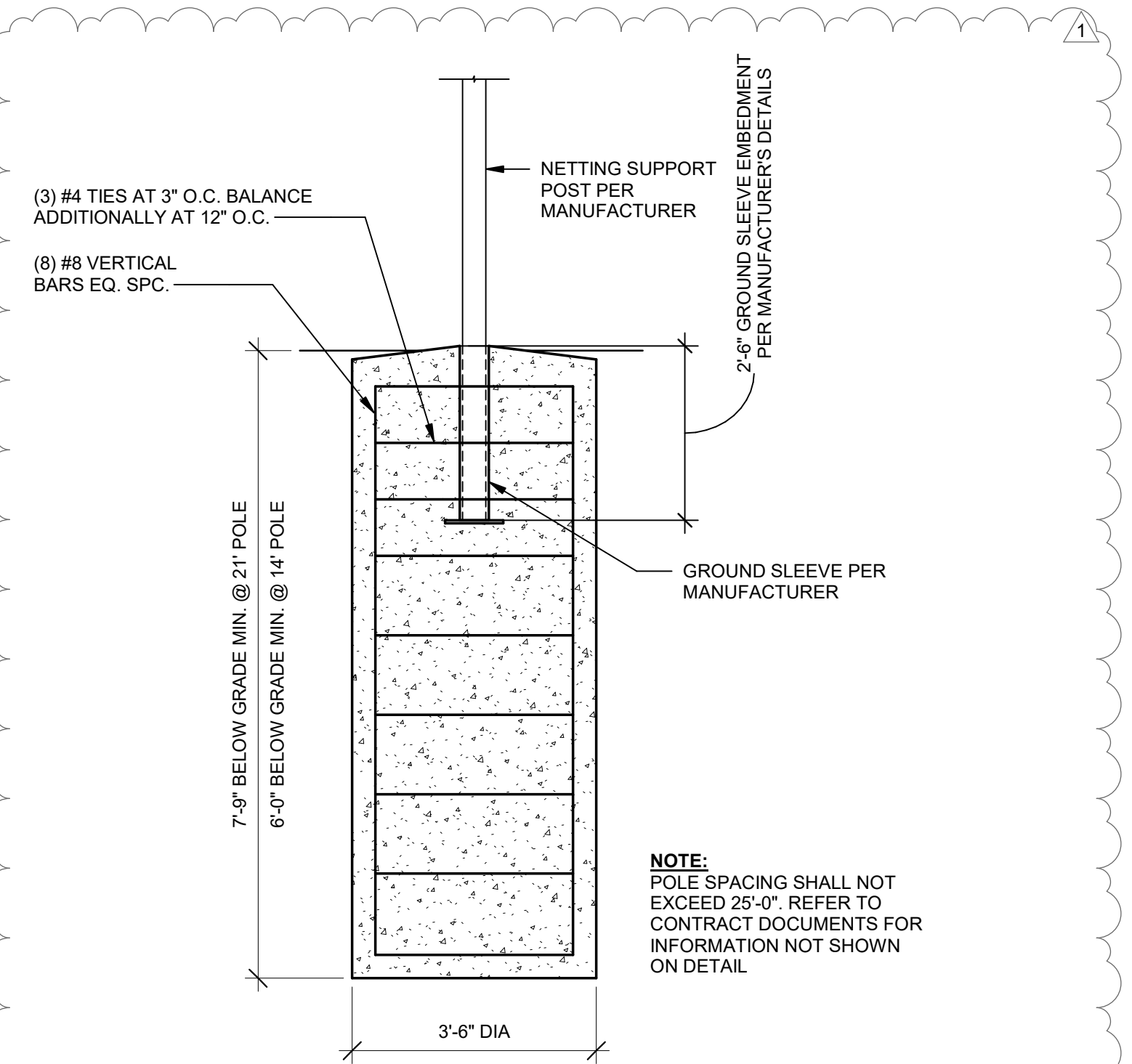
2 EXTERIOR CMU WALL
Scale: 3" = 1'-0"



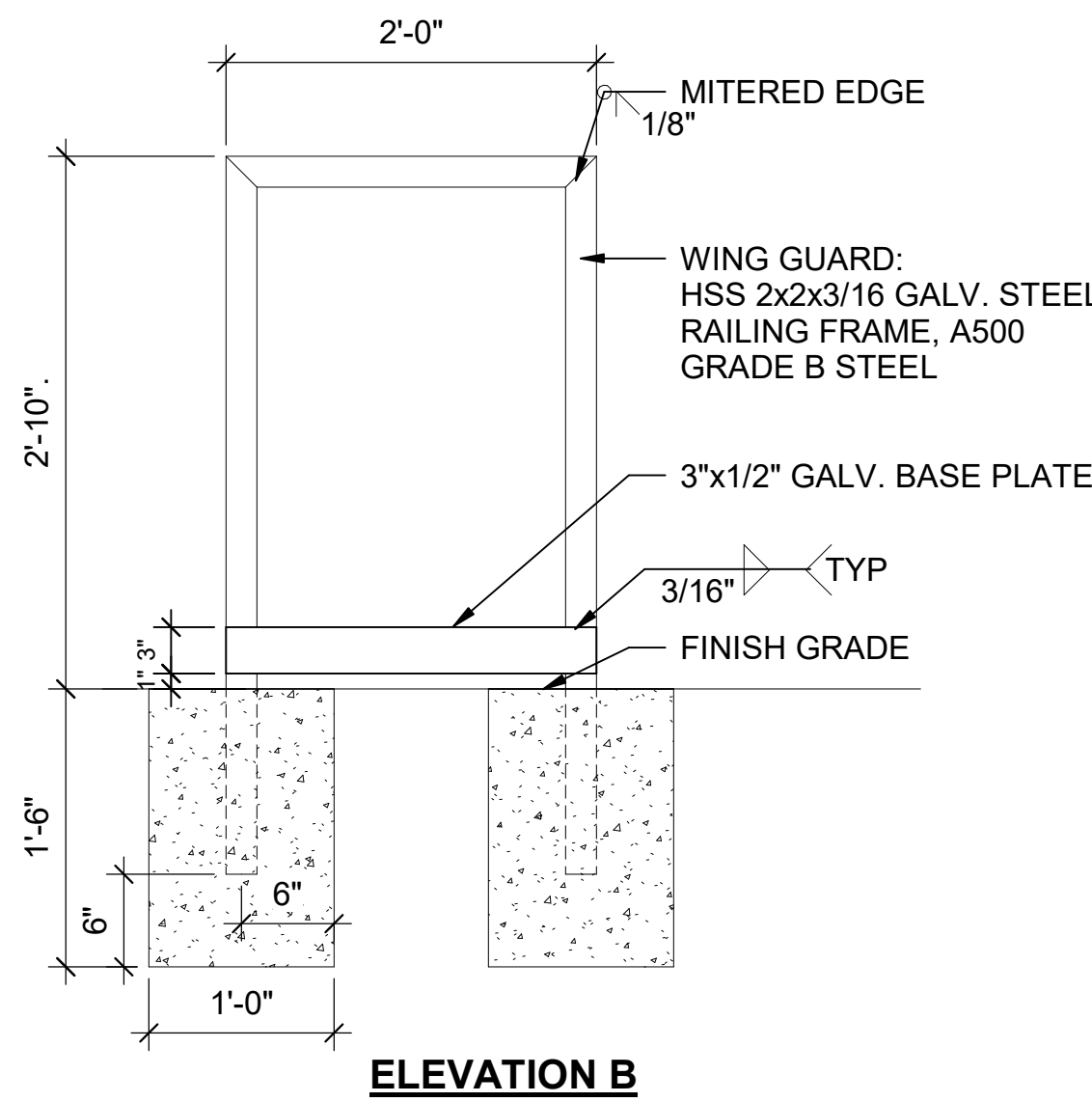
5 CONCRETE WHEEL STOP SECTION/PLAN
Scale: 3/4" = 1'-0"



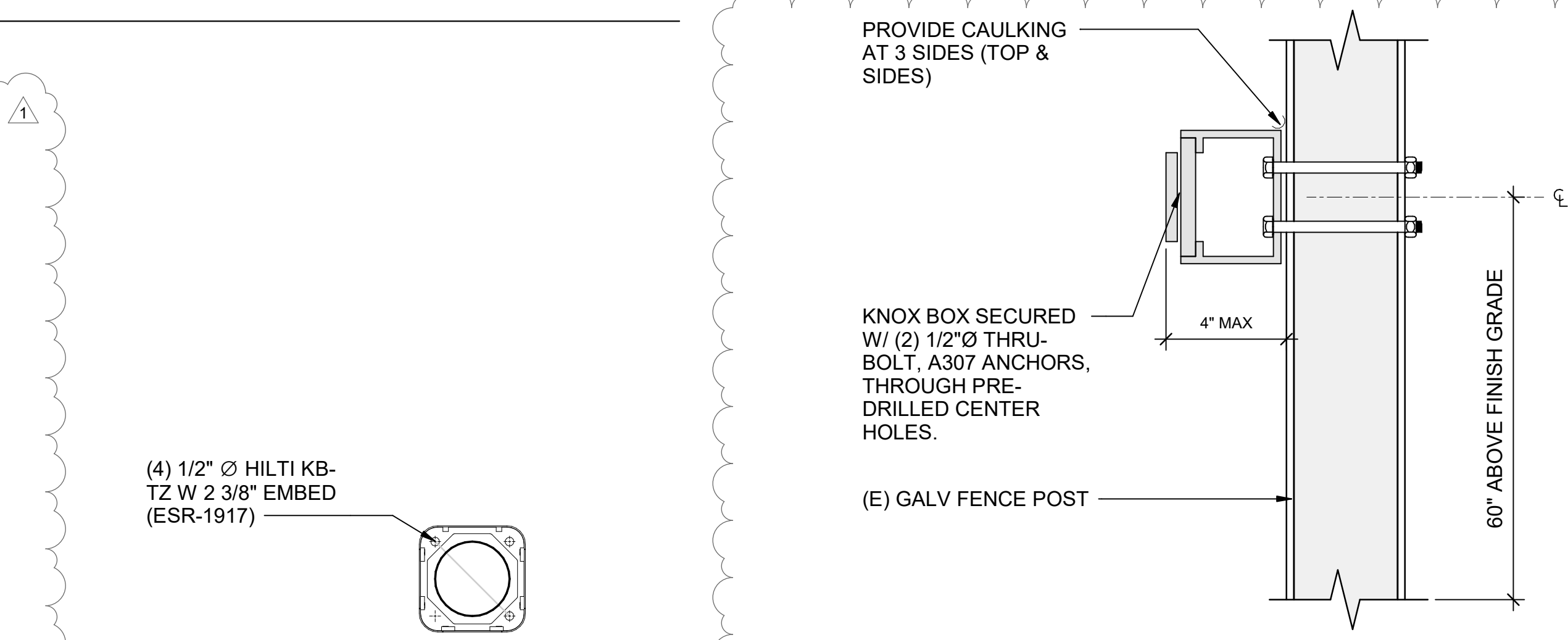
7 HVAC/PLUMBING PIPE PENETRATION DETAIL, MASONRY/ CONCRETE WALL - P5
Scale: 3" = 1'-0"



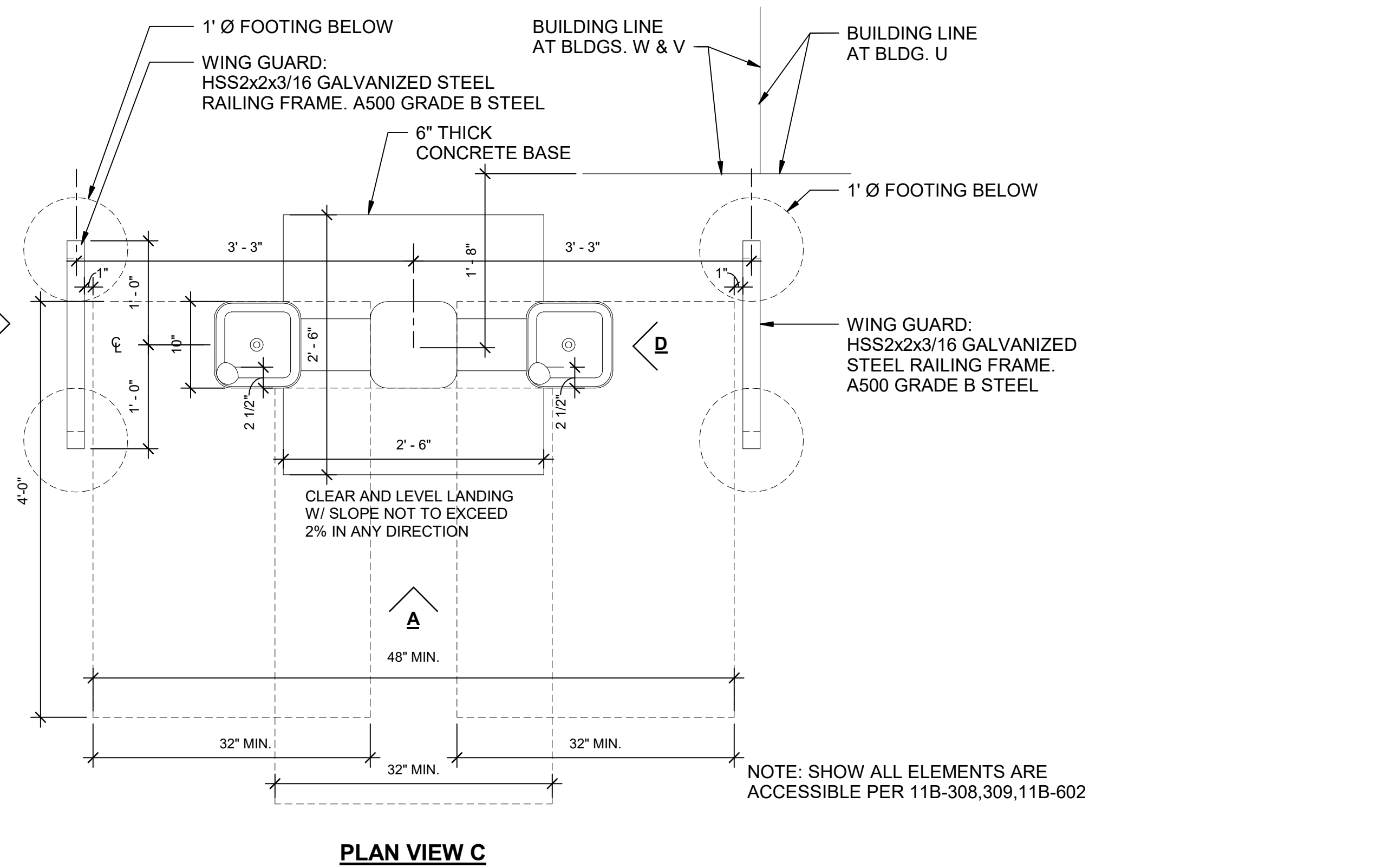
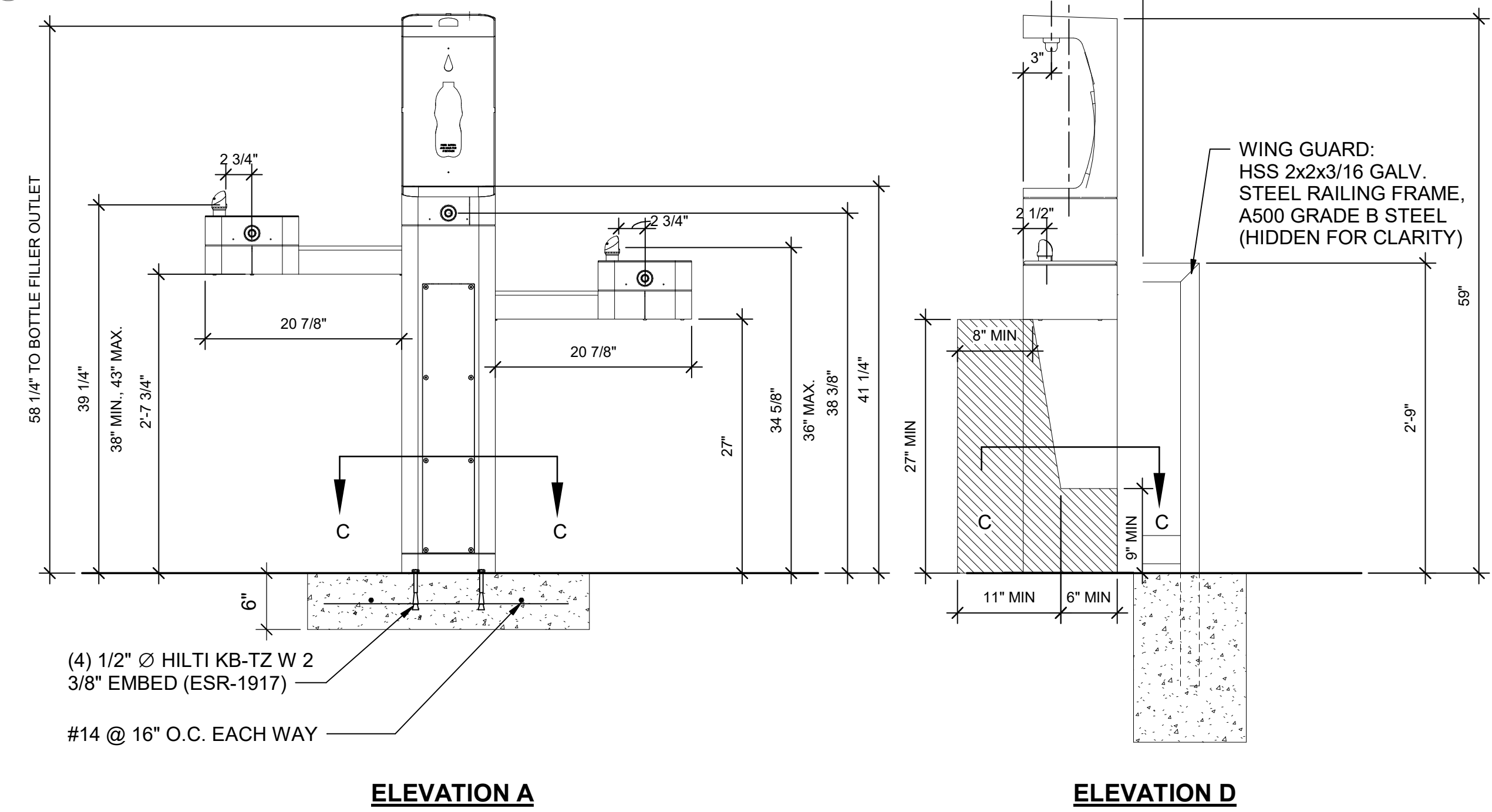
6 DISCUS CAGE POLE EMBEDMENT
Scale: 1/2" = 1'-0"



1 WATER FOUNTAIN DETAIL - HAWS MODEL 3612 OR EQUAL
Scale: 1" = 1'-0"



8 KNOX BOX TO FENCING MOUNTING
Scale: 3" = 1'-0"



PLAN VIEW C
Scale: 3" = 1'-0"

NOTES

1. A CONCRETE CUTTING SAW SHALL BE USED TO SAWCUT ALL EXISTING PAVEMENT ALONG LINES OF REMOVAL, WHERE NEW PAVEMENT IS TO ADJOIN EXISTING.
2. OVERLAP SEALER COAT A MINIMUM OF 12" BEYOND JOINT LINES, WHERE NEW PAVEMENT ADJUTS EXISTING.
3. ALL SURFACES SHALL PROVIDE POSITIVE DRAINAGE FREE FROM DEPRESSIONS AND SHALL BE FLOODED AS NECESSARY TO VERIFY DRAINAGE CHARACTERISTICS. DUST SHALL BE CONTROLLED BY WATERING.
4. PATCH, REPAIR AND/OR RECONSTRUCT ALL DAMAGED AREAS OF EXISTING PAVING TO MATCH ADJACENT SURFACES.
5. REFER TO ELECTRICAL AND PLUMBING DRAWINGS PRIOR TO EXCAVATING, TRENCHING OR GRADING OPERATIONS. VERIFY LOCATIONS AND DEPTHS OF UTILITIES AND PROTECT THROUGH-OUT THE WORK.
6. SCORE CONCRETE WALKS AND RAMPS AS INDICATED. EQUAL SPACES BETWEEN EXPANSION JOINTS.
7. DOUBLE LINES ACROSS CONCRETE WALKS INDICATE EXPANSION JOINTS AT 20'-0" O.C. MAXIMUM.
8. STRIPPING & LETTERING SHALL BE 2 COATS OF WHITE TRAFFIC PAINT APPLIED IN ACCORDANCE WITH MANUFACTURER'S WRITTEN INSTRUCTIONS. ALL LETTERING TO BE 8" HIGH WITH 1-1/2" WIDE STROKE. ALL STRIPPING 4" WIDE. ALL STRIPPING TO BE APPLIED WITH CUTOUTS & TEMPLATES WITHOUT FUZZINESS OR WAVINESS.

REVISIONS

1 ADDENDUM 1 02/01/2022

THIS APPROVAL IS FOR ITEMS WITHIN CLOUDED AREAS ONLY. FOR OTHER INFORMATION NOT CONTAINED WITHIN CLOUDED AREAS, REFER TO ORIGINAL DSA APPROVED PLANS.
DO NOT USE THESE PLANS AS SUBSTITUTE FOR THE ORIGINAL DSA APPROVED PLANS



NORWALK LA MIRADA UNIFIED SCHOOL DISTRICT
LA MIRADA HIGH SCHOOL NEW FOOTBALL STADIUM PROJECT
13520 ADELA DRIVE, LA MIRADA, CA 90638

DSA # 03-120551

NAC
ARCHITECTURE

NAC NO. 161-19015
DATE 02/01/2022

ADDENDUM 1

EXTERIOR DETAILS

A5.02